



Contact Sensor x2



Double up on sensors! Monitor more doors, windows, and cabinets with this 2-pack of WiZ Contact Sensors. Receive an instant notification if triggered, and you can also program your WiZ lights to switch on automatically. Easily install with the included adhesive backing and receive an alert when the battery needs replacing.

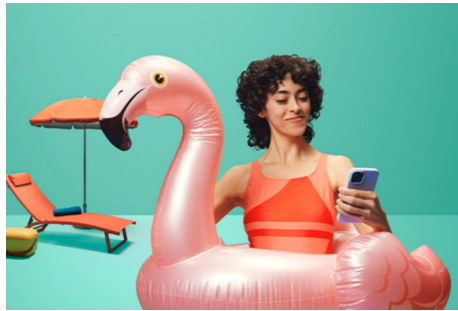
PRODUCT HIGHLIGHTS

- Battery operated
- Wireless installation
- Works with all Connected by WiZ products



Know the status of your doors or windows

No more worrying about whether you remembered to close the windows and doors when you left home. Relax in the knowledge that you can check the status of all your sensors at any time, and from anywhere, using the WiZ app.



Real-time alerts and light alarms

Receive real-time notifications on your smartphone if any of your contact sensors are triggered. For extra peace of mind, link them to your WiZ lights and create light alarms that flash brightly to warn off potential intruders.

Turns lights on and off automatically

Enjoy the benefits of home automation by incorporating contact sensors into your existing WiZ home. For example, mount one on a door and program your lights to automatically switch on or off whenever you open or close it.



Mount on any window or door

Easily mount the WiZ contact sensor on any of the entry points in your home using the gentle adhesive tape included in the box. The gap between both parts of the sensor can be anywhere up to 20 mm.



SPECIFICATIONS

DESIGN AND FINISHING

Color: White
Material: Plastic

EXTRA FEATURE/ACCESSORY INCL.

Batteries included: Yes
Detection Area: 0 - 0.02 m
Control Distance: 15 m

POWER CONSUMPTION

Voltage: 3 V

PRODUCT DIMENSIONS AND WEIGHT

Net weight: 0.0351 kg
Overall height: 15/16 inch
Overall length: 3-1/16 inch
Overall width: 15/16 inch

SERVICE

Warranty: 2 year(s)

TECHNICAL SPECIFICATIONS

Battery type: CR123A
IP code: IP20
Class of protection: Class III - Safe
Extra Low Voltage

WHAT'S SUPPORTED

Compatible with Effects: Yes
Defined support period: Minimum of 60 months after introduction date
Max. number of accessories: 9999
Compatible operating systems: iOS
Android
Communication protocol: Bluetooth
WiFi (2.4GHz)

PACKAGING DIMENSIONS AND WEIGHT

EAN/UPC - product: 046677605537
Net weight: 0.03 kg
Gross weight: 0.09 kg
Height: 16.1 cm
Length: 4.6 cm
Width: 7.6 cm



© 2026 Signify Holding. All rights reserved. The information provided herein is subject to change, without notice. Signify does not give any representation or warranty as to the accuracy or completeness of the information included herein and shall not be liable for any action in reliance thereon. The information presented in this document is not intended as any commercial offer and does not form part of any quotation or contract, unless otherwise agreed by Signify. All trademarks are owned by Signify Holding or their respective owners.