



Indoor Camera

Keep an eye on your home 24/7 with real-time video streaming in high definition using the WiZ Indoor Camera. When the built-in motion or sound sensors are triggered, you'll receive an instant notification so you can communicate using the two-way talk feature or launch light-and-sound alarms to deter intruders. Control using voice commands when you're home, or the WiZ app when you're away. If you have any other WiZ lights, you can use them as motion sensors too, thanks to SpaceSense.

PRODUCT HIGHLIGHTS

- End-to-end encryption
- 10-day event and recording access
- 120° Field of view



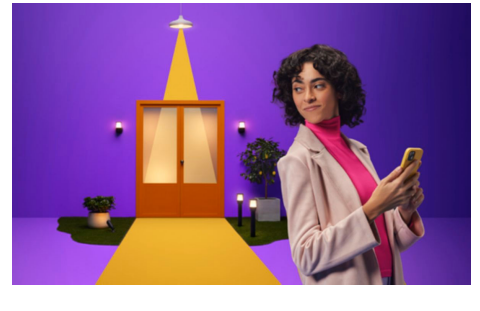
Quick & easy setup for home monitoring

Includes a desk-stand and wall mount for convenient use in any location. Angle your WiZ camera to cover your targeted area. Just switch on and connect to your Wi-Fi. It can't be easier! Configure your camera settings via the WiZ app, enabling home monitoring, whenever you wish, even when you're away.



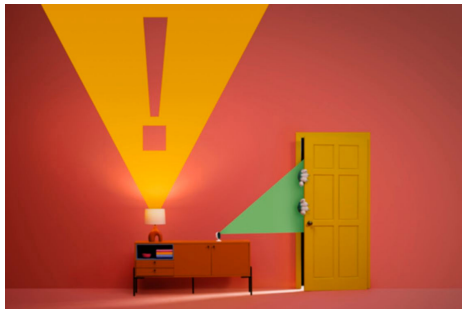
See what's happening at home

Check on your home anytime and from anywhere, with our real-time video streaming feature. Experience peace of mind when far away, by assessing all incident notifications, seeing what's going on in your home and avoiding false alarms.



Use WiZ lights as an alarm or to mimic your presence

When away on vacation, make it appear that someone is at home by setting your WiZ lights on and off automatically, simulating presence at home, discouraging potential intruders. Plus, you can also set your lights to flash, should an incident be detected, notifying your neighbours of any unwelcome activity.



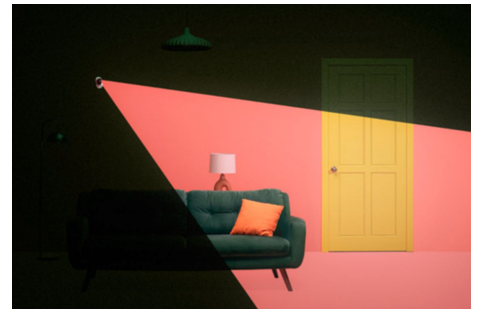
Enhance your sense of security with motion notifications

Get immediate notifications via your smartphone of loud sound or movement detected by WiZ camera when you're away. You can also set your camera to automatically start recording* when activity is detected.*Paid subscription or SD card is required.



Integrate your WiZ camera to your smart home system

It's not just the WiZ app that can control your camera. Use Amazon Alexa or Google Assistant and stream your camera feed on supported displays. Capabilities and functionalities vary from system to system.



Clear visuals, day or night

High-definition video and infrared (IR) light captures activity, during the day or at night, within a 120° field of view.



SPECIFICATIONS

DESIGN AND FINISHING

Color: White
Material: Plastic

EXTRA FEATURE/ACCESSORY INCL.

Solar Energy: No
Warm glow dimmable light: No

MISCELLANEOUS

Especially designed for: Dining Room
Living Room Children's room

PRODUCT DIMENSIONS AND WEIGHT

Net weight: 0.4 lb
Cable length: 2,500

SERVICE

Warranty: 2 year(s)

TECHNICAL SPECIFICATIONS

IP code: IP20
Class of protection: Class III - Safe
Extra Low Voltage
Camera lens field of view (degrees):
120
Camera adapter: No
Camera digital Zoom: No
USB connection adapter: USB-A

THE BULB

Software upgradable: Yes

THE CAMERA

Max. video resolution: 1080P
Video modes: 1080P
Video features: 30FPS
Motion detection: Motion, People &
Sound detection
Night Vision: Yes, with infrared LED
Placement Camera: Wall & desktop
mount
Weatherproof: No
Microphone: Yes
Audio: Two-way audio
Networking: WPA2 WPA3
Operating temperature: 0°C to +40°C
Connectivity protocol: WiFi (2.4GHz)
Height: 1.4
Length: 4.7
Depth: 2.6
Sound alarm: No
Two-way talk: Yes
Storage way: Local & Cloud storage
(subscription)

WHAT'S SUPPORTED

Compatible with Effects: Yes
WiFi: 802.11b/g/n
Defined support period: Minimum of
60 months after introduction date
Max. number of accessories: 9999
Compatible operating systems: iOS
Android
Communication protocol: Bluetooth
WiFi (2.4GHz)
Compatibility with 3rd party systems:
Alexa Google Home Siri Shortcuts

PACKAGING DIMENSIONS AND WEIGHT

EAN/UPC - product: 046677604608
Net weight: 0.19 kg
Gross weight: 0.3 kg
Height: 13.8 cm
Length: 8.9 cm
Width: 10.5 cm



© 2026 Signify Holding. All rights reserved. The information provided herein is subject to change, without notice. Signify does not give any representation or warranty as to the accuracy or completeness of the information included herein and shall not be liable for any action in reliance thereon. The information presented in this document is not intended as any commercial offer and does not form part of any quotation or contract, unless otherwise agreed by Signify. All trademarks are owned by Signify Holding or their respective owners.